

# Installation and operating instructions

## Traffic light SGA







## Important warning and safety notes for installation and operation

- These installation and operating instructions form an integral part of the product. They have been specifically written for professional installers trained and skilled in the trade and should be carefully read in their full length before carrying out the installation. They describe the proper installation and operation of the traffic light SGA only, not of the overall device "automatic gate". After the installation this manual has to be handed over to the user.
- **Installation, connection, adjustments, putting into operation, and servicing may only be carried out by trained professionals in full accordance with these installation- and operating instructions.**
- Before carrying out works at the barrier-system, the power supply has to be turned off.
- **The EU Machine Directive, laws and rules concerning the prevention of accidents, and laws and standards which are in force in the EU and in the individual countries have to be strictly followed.**
- **Attention should be paid to the applicable ÖVE/VDE regulations and standards in the specific case of application.**
- The TOUSEK Ges.m.b.H. cannot be held liable for any claims resulting from disregards of the laws and standards in force during the installation and operation.
- The packaging materials (cardboard, plastic, EPS foam parts and filling material etc.) have to be properly disposed of in accordance with the applying recycling- and environmental protection laws. They may be hazardous to children and therefore have to be stored out of children's reach.
- The product is not suitable for installation in explosion-hazardous areas.
- The product may only be used in accordance with its original purpose, for which it has been exclusively designed, and which is described in these installation and operating instructions. The TOUSEK Ges.m.b.H. rejects any liability if the product is used in any way not fully conforming to its original purpose as stated herein.
- Children have to be instructed, that the gate facility as well as the belonging parts may not be used improperly, e.g. for playing.
- The TOUSEK Ges.m.b.H. rejects any liability for claims resulting from usage of the product in combination with components or devices which do not fully conform to the applying safety laws and rules.
- Only original spare- and replacement parts may be used for repair of the product.

### Manufacturer's Declaration of conformity:

The company TOUSEK Ges.m.b.H., Zetschegasse 1, 1230 Vienna/Austria, declares that the traffic light SGA, complies with the following directives:

- Low Voltage Directive 2006/95/EC, incl. changes
- Electromagnetic Compatibility Directive 2004/108/EC, incl. changes

Vienna, 15. 06. 2006

# Traffic light SGA

## Features

- Signal lamp in modular construction, can be mounted side-by-side
- With support bracket made of steel, powder-coated
- Wall or ceiling installation possible
- Housing rotatable
- With reflector
- Available lense colours: red, green, orange
- Ring with 90° lens to bolt on
- High temperature resistant to deformation, impact resistant
- With mounting equipment
- weather-proof
- **CE**



## General

The tousek signal lamp SGA consists of a modular construction that means that for several situations the single lamps (red, green or yellow/orange) can be mounted as a multiple lamp (e.g.: double-red, red-green, etc...).

The housing of the signal lamp is made of impact-resistant plastic and for better heat deflection held in beige colour. The front cover is in black and has sunshades for better recognition with sunlight. To make unwanted manipulations in the signal lamp complicated the front cover is furnished with Allan screws (hexagon socket for bolts)

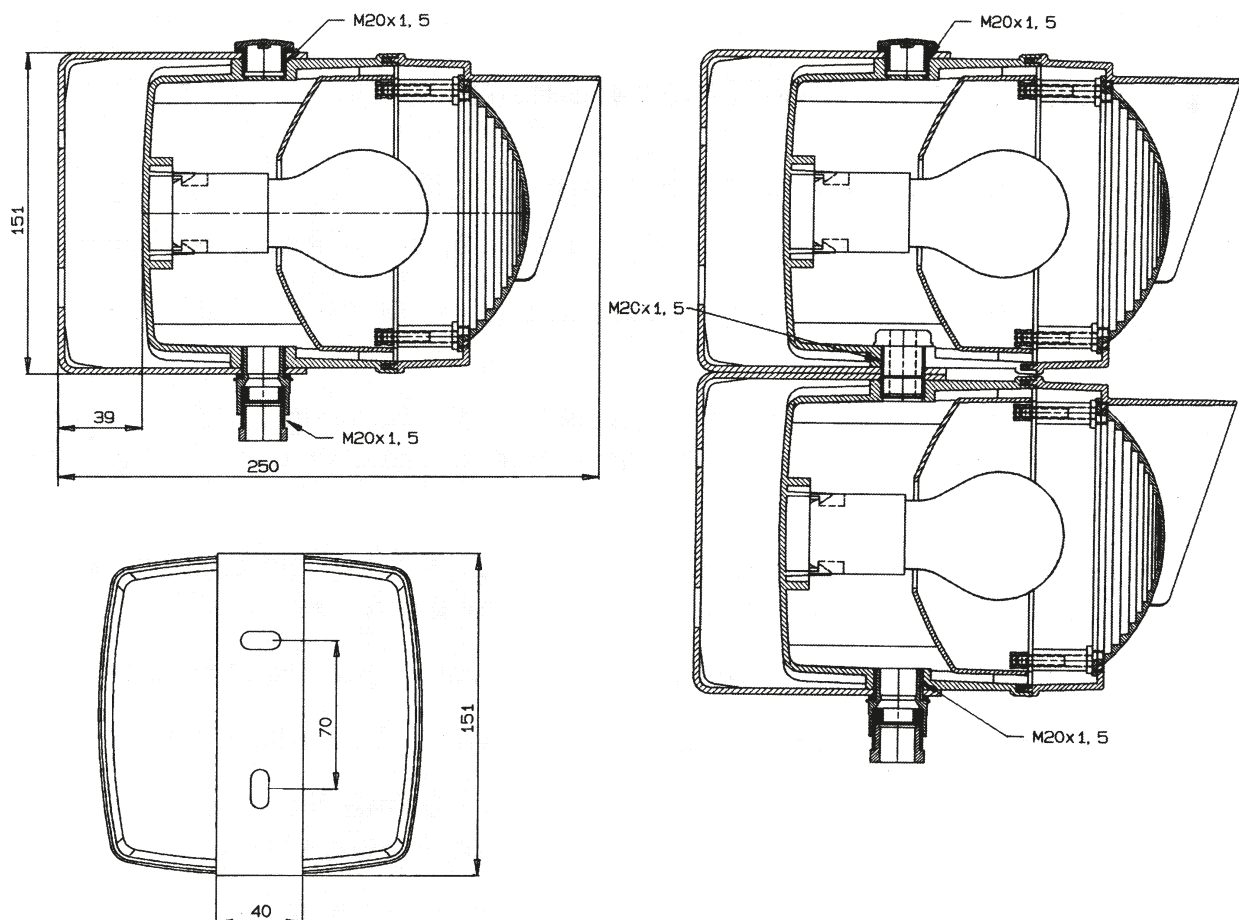
The pivot fastening made of steel plate, powder-coated, can be moved 180° and enables side installation of traffic lamp.

**Accessories:** Connection fitting, Pillar

## Technical data

Traffic light SGA			
Lamp holder (bulb socket)	E27, max. 40W	Construction of lamp	VDE 0711
Bulb E27	impact resistant, 230V, 40W	Protection type	IP65
Cable insertion	M20 x 1,5	Protection class	II
Connection cable	0,5–1,5 □	Protection isolation	□
Material	ABS HH	Mounting bracket	steel, powder coated
Impact resistance class	DIN 53 453	article code:	
Resistant to deformation	+96°C up to +110°C	traffic light RED-GREEN	13710090
Temperature resistant up to	approx. +85°C	traffic light RED	13710050
Auto ignition temperature	approx. 400°C	traffic light GREEN	13710060
Acceptable ambient temperature	-30°C up to approx. +70°C	traffic light YELLOW	13710070

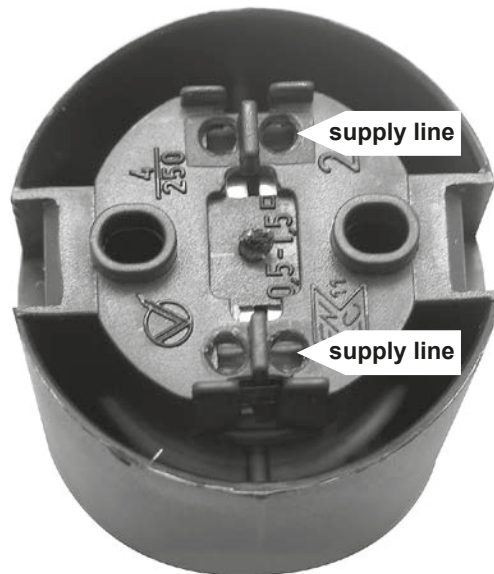
- Install both mounting brackets without space between.
- For the lower lamp M20 x 1,5 pierce the pre-stamping for cable feedthrough.
- Slide the upper lamp into mounting bracket and fix with closing-off M20 x 1,5 bolting incl. sealing ring.
- Place small sealing ring from connection fitting into the drilling M20x1,5 (pre-marked) and slide lower lamp into the mounting bracket.
- Fix the lower lamp with M20 x 1,5 bolting for cable feedthrough and then bolt both lamps with connection fitting incl. sealing ring.
- Adjust the positioning of lamps and seize all bolts.
- Wire up the signal lamps and attach bulb socket with E27 screw thread.
- Insert reflector and screw in a bulb E27 / max. 40Watt (not included) standard size, tube 60mm diameter, 105–110mm long, impact resistant.
- Bolt the refractor with 4 Allan screws (socket head bolts) in diagonal alternately.





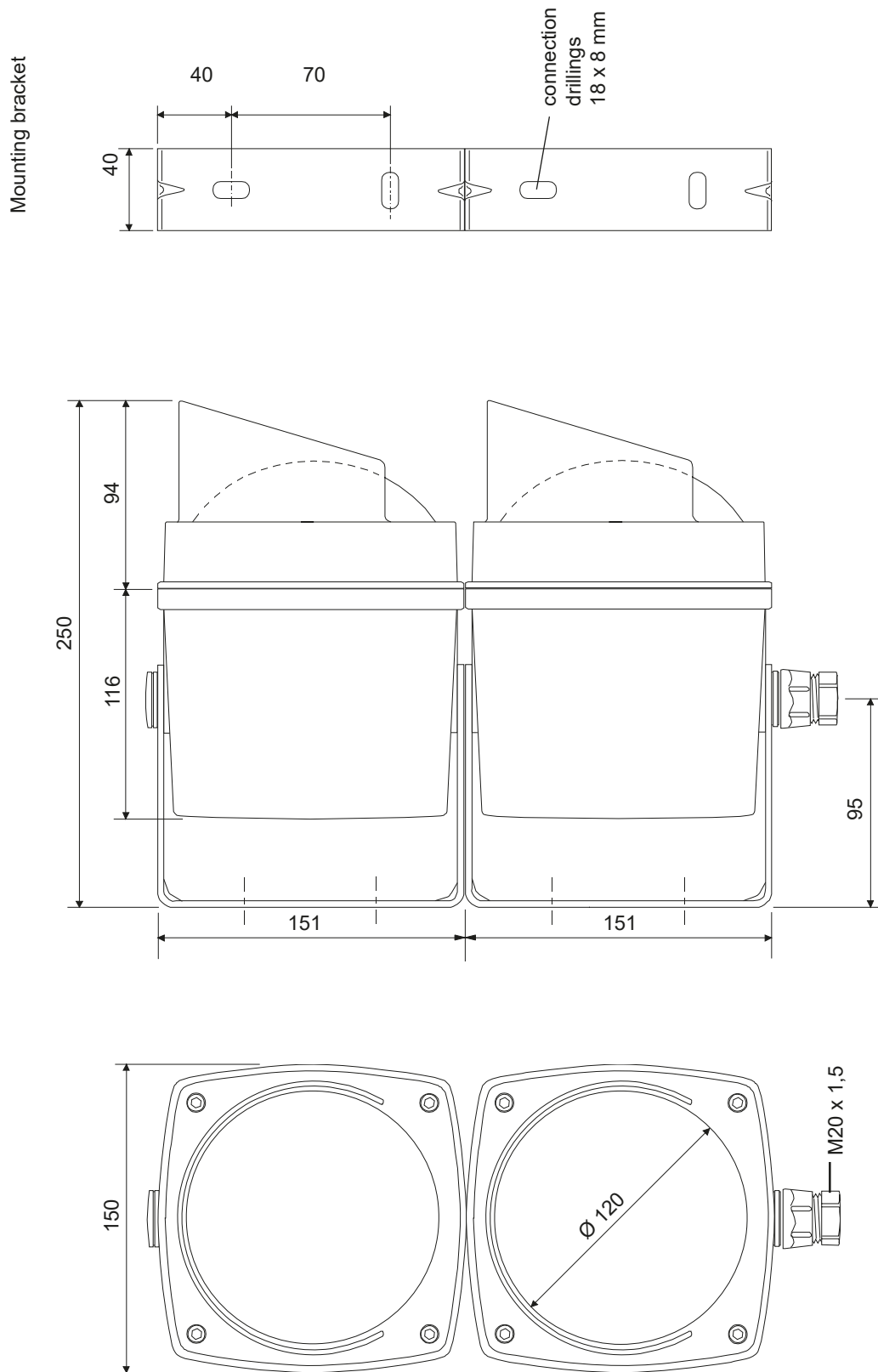
### Terminal connection

- For connection of the cable please remove the bulb socket (connected through clamp-connection). For that please use a screwdriver to detach the locking (see picture).
- After effected cable connection please attach bulb socket back to the housing (has to snap in).



Connection cable 0,5–1,5 □

- measures in mm



We reserve the right to change dimensions and technical specifications without prior notice.

## **tousek PRODUCTS**

- sliding gate operators
- cantilever systems
- swing gate operators
- garage door operators
- folding door operators
- traffic barriers
- electronic controls
- radio remote controls
- key operated switches
- access control
- safety devices
- accessories

**Tousek Ges.m.b.H. Austria**  
A-1230 Vienna  
Zetschegasse 1  
Tel. +43/ 1/ 667 36 01  
Fax +43/ 1/ 667 89 23  
info@tousek.at

**Tousek GmbH Germany**  
D-83395 Freilassing  
Traunsteiner Straße 12  
Tel. +49/ 8654/ 77 66-0  
Fax +49/ 8654/ 57 196  
info@tousek.de

**Tousek Benelux NV**  
BE-3930 Hamont - Achel  
Buitenheide 2A/ 1  
Tel. +32/ 11/ 91 61 60  
Fax +32/ 11/ 96 87 05  
info@tousek.be

**Tousek Sp. z o.o. Poland**  
PL 43-190 Mikołów (k/Katowic)  
Gliwicka 67  
Tel. +48/ 32/ 738 53 65  
Fax +48/ 32/ 738 53 66  
info@tousek.pl

**Tousek s.r.o. Czech Republic**  
CZ-252 61 Jeneč u Prahy  
Průmyslová 499  
Tel. +420 / 777 751 730  
info@tousek.cz



**tousek**<sup>®</sup>  
G A T E A U T O M A T I O N

*your service partner:*

