

Instruction manual tousek Service-Interface TSI



Compatible with:

- Series PULL T, PULL TSA, TPS 20 (N, PRO), TPS 35 PRO, -40 PRO, -60 PRO, TPS 6speed
- Barriers PASS 838 / ST 80 and PASS 882 / ST800
- Control units ST 12/5, ST 51 and ST 61



tousek[®]
G A T E A U T O M A T I O N

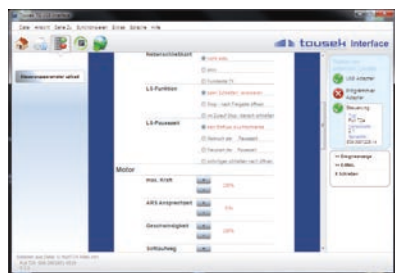


Features

- Programming via PC
- Event Viewer of the last 800 cycles (approx.)
- Saving of the preset menu-parameters
- Uploading of preset menus into the control board
- Recording of all the changes in the menu
- Cycle counter
- Software updates via Internet
- E-mail transmission (Internet access required)
- Compatible with:
 - PULL T, PULL TSA, TPS 20 (N, PRO), TPS 35 PRO, -40 PRO, -60 PRO, TPS 6speed
 - Barriers PASS 838 / ST 80 and PASS 882 / ST800
 - Control units ST 12/5, ST 51 and ST 61



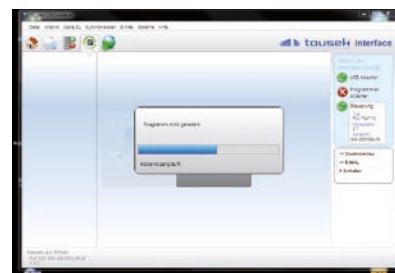
Programming via PC



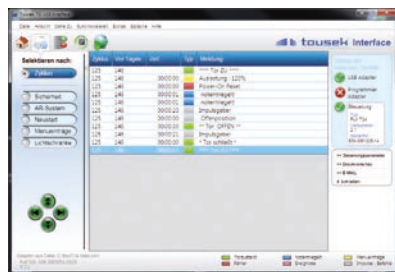
You can easily program the control system by controlling and clicking in the tousek-menu and then save your configurations under any desired name

Download the current drive software using the update function and transfer it to the control board.

Softwareupdate



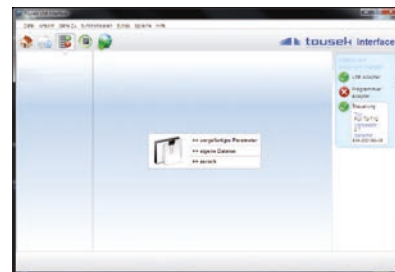
Event log



The last 800 cycles (approx.) are saved with indication of day and time. Sortable by different events.

Load your settings onto the control boards or read out parameters

Loading parameters



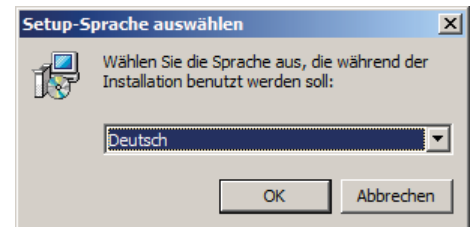
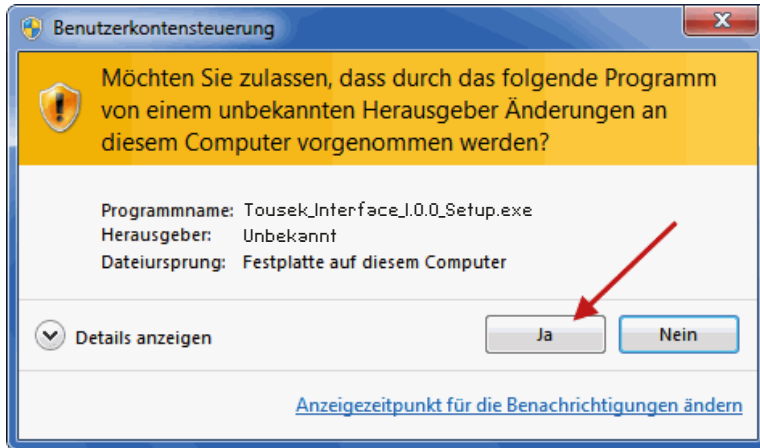
Technical data

tousek Service-Interface TSI

Interface	from USB 1.0	Article no.	12111450
System requirements	operating system from Windows XP, RAM min. 256MB, USB connection, resolution min. 1024 x 600		
Accessories	incl. 1,5m USB- cable and software on USB-Stick		

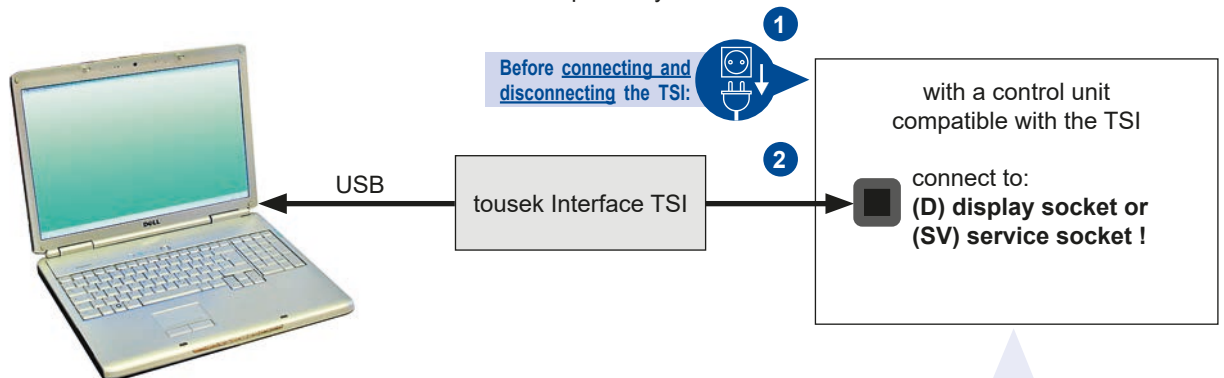
This manual is the sole property of the TOUSEK Ges.m.b.H. and may not be made available to competitors. All rights reserved. No part of it may be reproduced without our prior written permission. We will not accept liability for any claims resulting from misprints or errors. This edition of the manual replaces all earlier publications of the same.

- Start the installation program Tousek_Interface_x.x.x_Setup.exe
- Confirm the user account control (from Windows Vista).
- Select the desired language.
- Follow the steps in Tousek Interface Setup Assistants
- After successful installation you can start the tousek Interface program.



Connection

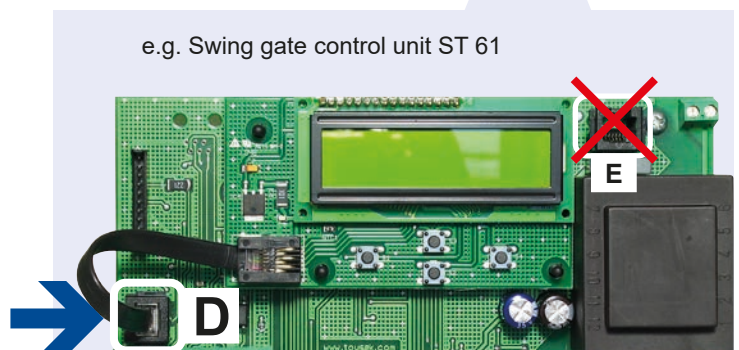
- To read out or to transmit files via tousek interface TSI to an operator you need a connection made as shown.



Important

- 1 Before connecting and disconnecting the TSI switch off the power supply!
- 2 The tousek service interface must be connected with display socket (D) or service socket (SV) (disconnect connected plug before)!

ATTENTION: Incorrect connections, such as with the socket (E) for the electric lock module of the ST61 leads to destruction!



File formats

File format	Function
*.ctm	Includes the control data, which can be loaded from the PC (Menu and events)
*.ctf	Control software, that can be transferred to the operator

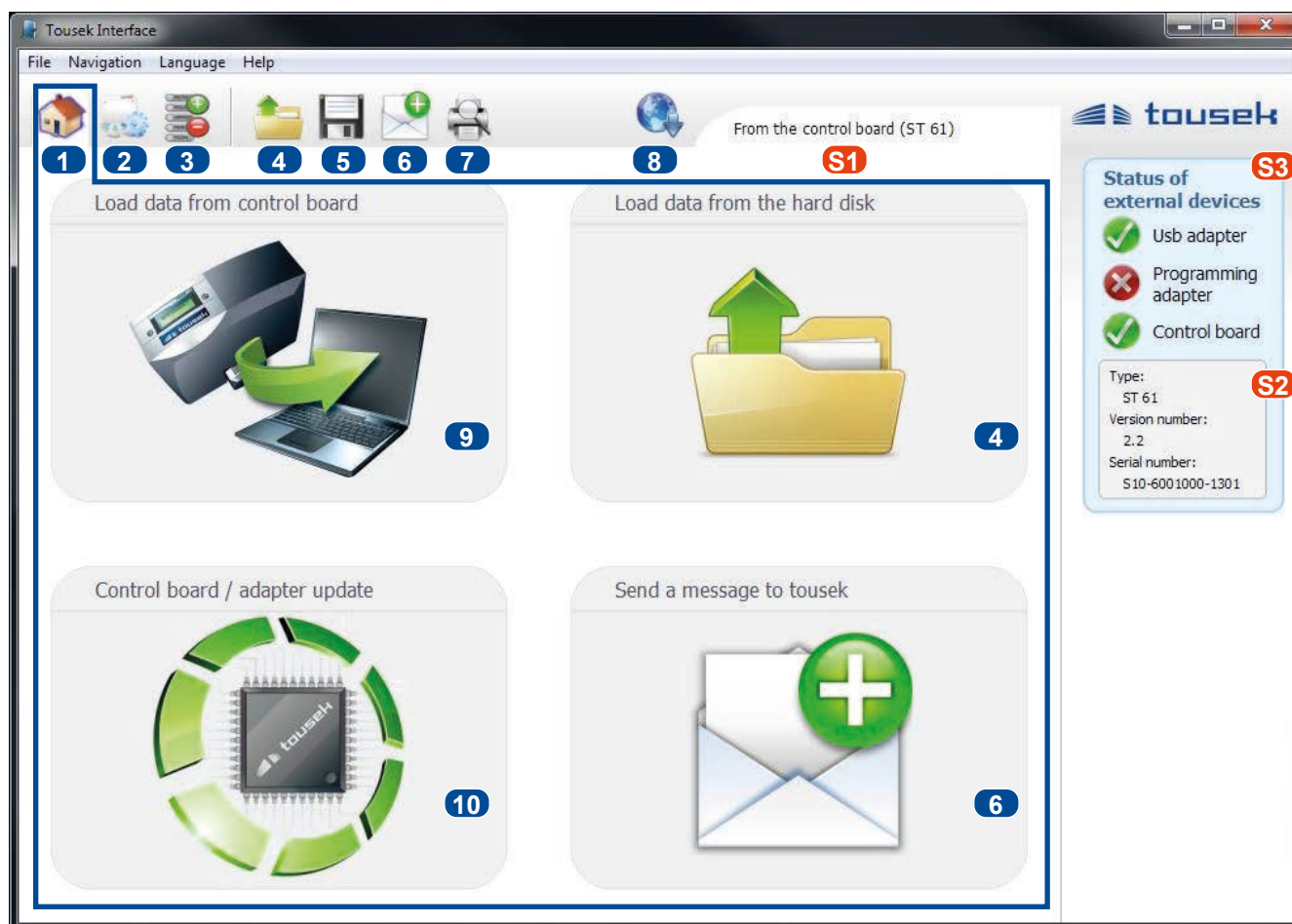
3.1 Main menu 1

tousek Service-Interface TSI

- 1 Main menu of tousek Interface Software
- 2 Event overview (see 3.4)
- 3 Setting and transmission of control menus to operator (see 3.5)
- 4 Opening the control data, that are saved on the PC (menu settings and event log)
- 5 Saving control data to the PC
- 6 Writing e-mail for support
- 7 Printing the event log
- 8 Searching for Software Updates
- 9 Loading the control data from the operator (menu settings and event log) (see 3.2)
- 10 Transferring new control software to the operator (see 3.3)

Status display:

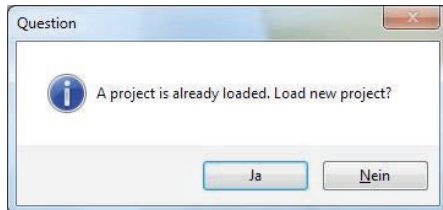
- S1** information about the currently loaded control data (from PC or from operator)
- S2** Information about the connected (!!!) control units.
- S3** Status of external devices



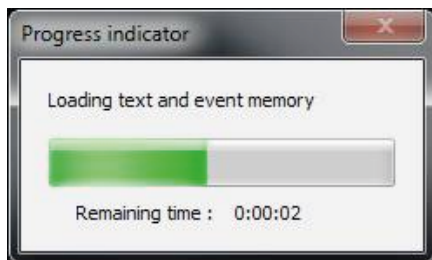


ATTENTION: This function is available only when a control unit is connected via service interface.

- Press the button **9** in main menu.
- If previously data has already been loaded, the following message appears:



ATTENTION: if you confirm with YES, the previously carried out changes to the control menu and the read out event logs gets discarded. Please don't forget to save your data.



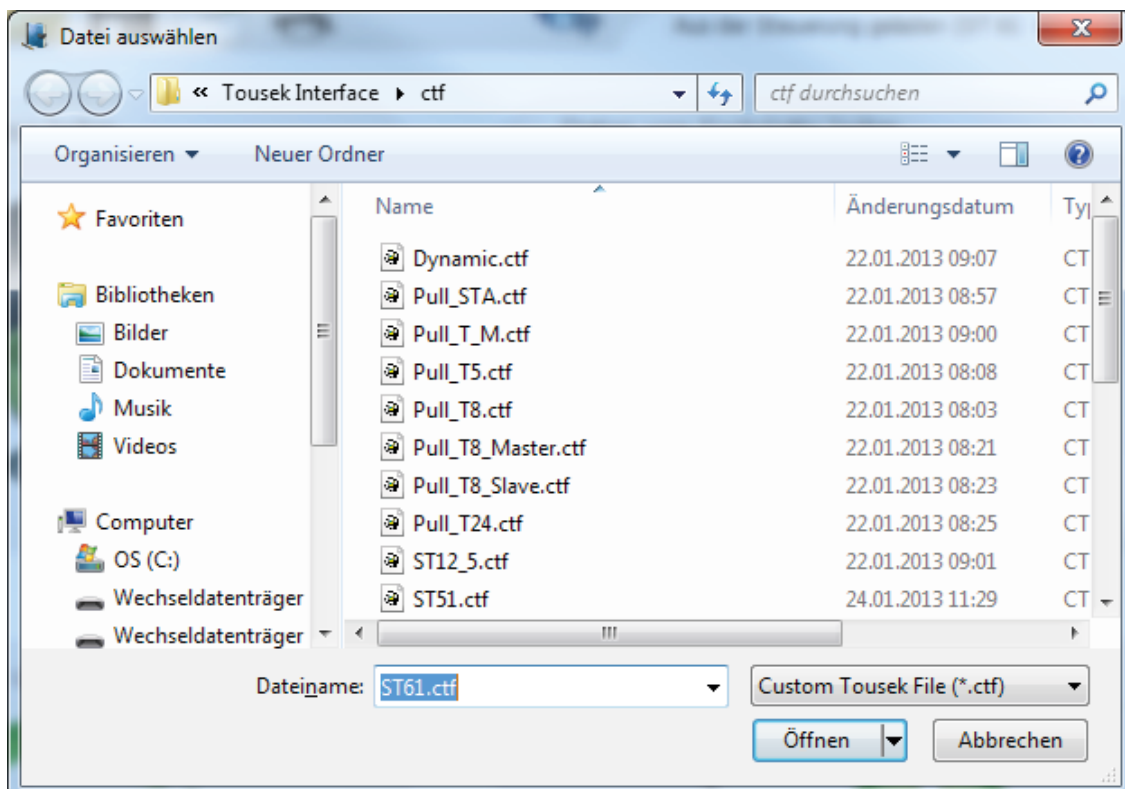
ATTENTION: Please wait for the data transfer to be completed without carrying out any other action on your PC, as this may impede the transmission!

3.3 Transferring new control software to the operator 10

- After pressing the button **10** in main menu, a file selection box is displayed.
- By default, is proposed the most recent control software suitable to the connected operator.
- You can also select a specific ctf file. The compatibility with the connected operator is automatically checked out.



ATTENTION: Please wait for the data transfer to be completed without carrying out any other action on your PC, as this may impede the transmission!



- 11 Select the display method
 - 12 Sort by cycles (a cycle includes all events that occur between consecutive closing movements of the gate)
 - 13 Sorting by control-specific criteria
- 14 Event marking within a cycle (up/down)
- 15 Switch between cycles
- 16 - when selecting by cycles 12: Time difference between the individual events
 - when selecting by other criteria 13: Elapsed time since the event (espect to the most recent event)
- 17 Description of the event
- 18 Set value (only for menu items)

Status display:

- S1 Information about the currently loaded control data (from PC or from operator)
- S2 Information about the connected (!!!) control units.
- S3 Status of external devices

The screenshot displays the Tousek Interface software. The main window is titled 'Tousek Interface' and has a menu bar with 'File', 'Navigation', 'Language', and 'Help'. Below the menu bar is a toolbar with various icons. The left sidebar contains a 'Select to:' section with buttons for 'Cycle' (12), 'Light barrier' (13), 'AR system', 'Menu', 'New start', and 'Safety'. The main display area shows a table of events with columns for 'Cycle', 'Time' (16), 'Message' (17), and 'Value' (18). The right sidebar shows the 'Status of external devices' (S3) with checkboxes for 'Usb adapter', 'Programming adapter', and 'Control board', and a section for control unit information (S2) including 'Type', 'Version number', and 'Serial number'. The top right corner shows 'From the control board (ST 61)' (S1).

Cycle	Time (16)	Message (17)	Value (18)
320		**** CLOSED****	
320	00:00:09	motor	motor OFF
320	00:00:07	delete position	
320	00:00:00	Software Reset	
320	00:00:07	impulse giver	
320	00:00:00	open position	
320	00:00:06	**** OPEN ****	
320	00:00:00	close position	
320	00:00:06	**** CLOSED****	



To edit a control menu, the data must be loaded either from the drive or PC - For information, see the status display **S1**.

- 19** Designation of a main level of the loaded menus.
- 20** Designation of a second level of the loaded menus.
- 21** Setting in the loaded menu: here underlining the current values and * means „default value“.
- 22** Transferring the set values in the connected (!) control unit **S2**



ATTENTION: This function is available only when control type and version of the loaded data correspond to the connected operator.

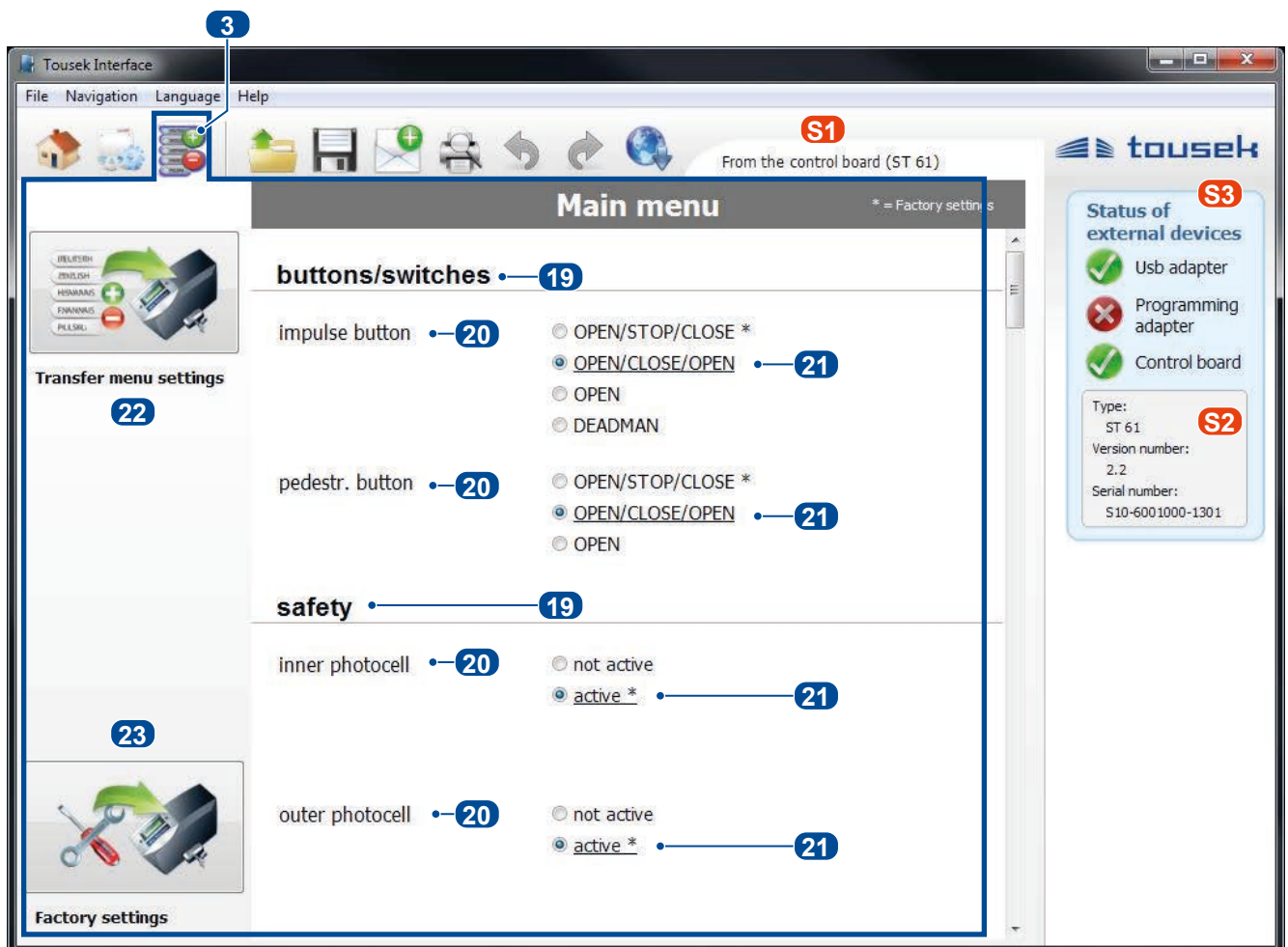
- 23** System restore (contains control updates and reset of all menu values)



ATTENTION: This function is available only when control type of the loaded data correspond to the type of the connected operator.

Status display:

- S1** Information about the currently loaded control data (from PC or from operator)
- S2** Information about the connected (!!!) control units.
- S3** Status of external devices



tousek PRODUCTS

- sliding gate operators
- cantilever systems
- swing gate operators
- garage door operators
- folding door operators
- traffic barriers
- electronic controls
- radio remote controls
- key operated switches
- access control
- safety devices
- accessories

Tousek Ges.m.b.H. Austria
A-1230 Vienna
Zetschegasse 1
Tel. +43/ 1/ 667 36 01
Fax +43/ 1/ 667 89 23
info@tousek.at

Tousek GmbH Germany
D-83395 Freilassing
Traunsteiner Straße 12
Tel. +49/ 8654/ 77 66-0
Fax +49/ 8654/ 57 196
info@tousek.de

Tousek Benelux NV
BE-3930 Hamont - Achel
Buitenheide 2A/ 1
Tel. +32/ 11/ 91 61 60
Fax +32/ 11/ 96 87 05
info@tousek.be

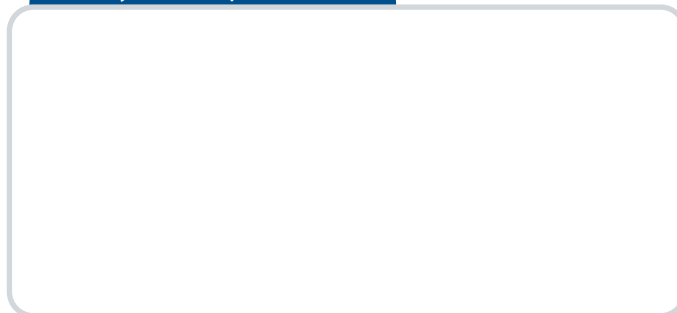
Tousek Sp. z o.o. Poland
PL 43-190 Mikołów (k/Katowic)
Gliwicka 67
Tel. +48/ 32/ 738 53 65
Fax +48/ 32/ 738 53 66
info@tousek.pl

Tousek s.r.o. Czech Republic
CZ-252 61 Jeneč u Prahy
Průmyslová 499
Tel. +420 / 777 751 730
info@tousek.cz

tousek
EN_TSI-Interface_00
03. 04. 2018



your service partner:



We reserve the right to change dimensions and/or technical specifications without prior notice. Claims resulting from misprints or errors cannot be accepted.

